

1015  
1018

# Aficio®

## 1015 / 1018

*Small Workgroup Digital Imaging Systems*



*Digital Technology*

**RICOH®**

## Aficio 1015

At 15 PPM, the Aficio 1015 is the perfect system for environments that are short on space – but not on work! Plus, it's easy to add both high-end faxing capabilities and network printing.

## Aficio 1018

At 18 PPM, the Aficio 1018 features a faster print speed and larger paper capacity than the Aficio 1015. And, like the Aficio 1015, you can add faxing and printing for a total document management solution.



**Aficio**<sup>®</sup>  
1015/1018

Feature	Aficio 1015	Aficio 1018
Copy/Print Speed	15	18
Standard Paper Capacity	350 Sheets	600 Sheets
Maximum Paper Capacity	1,350 Sheets	1,600 Sheets
Network or Parallel Printing	Optional	Optional
Faxing	Optional	Optional



# Aficio® 1015 / 1018

**Dependable, Affordable, Expandable.  
Simply Designed for Your Small Workgroup.**

*Engineered to provide consistently reliable results, the RICOH® Aficio® 1015 and the Aficio 1018 are dependable document management solutions for small companies and corporate workgroups. It is easy to upgrade the Aficio 1015/1018 to incorporate faxing and/or network printing capabilities that will provide you with a powerful cost saving, all-in-one system. Plus, the Aficio 1015/1018's compact design makes it easy to put all of its capabilities right where you need them most – in your workgroup.*

## **Quality On Every Page**

The Ricoh Aficio 1015/1018 incorporates sophisticated digital imaging technology, which ensures consistent, professional results. Crisp 600 dpi laser output combined with two original modes reproduces any document you can create, including general correspondence, accounting spreadsheets, business graphics, and monochrome photographic images - all with stunning accuracy.

**print**

**fax**

**copy**



## Digital Reliability

You have more important business than pampering your document output system. The Ricoh Aficio 1015/1018 incorporates a host of standard digital capabilities designed to minimize your involvement in the document production process.

- **Scan Once, Print Many** – Prevents wear and tear on your important originals and eliminates the need to wait for your originals before returning

to work. For greater productivity, add the optional automatic Document Feeder and scan up to 30 originals in one easy step.

- **Image Rotation** – Original images are automatically rotated 90° to match the orientation of the paper supply. This eliminates wasted copies along with the associated paper and consumable waste.



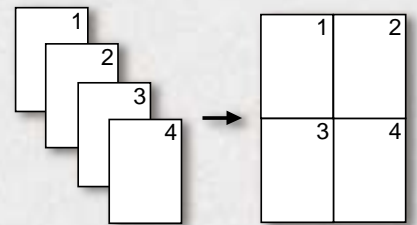
## Versatile Paper Handling Up To 11" x 17"

- A standard **350 sheet (Aficio 1015)** or a **600 sheet (Aficio 1018)** paper capacity ensures maximum productivity when producing long job runs.
- For added versatility, you can expand the Aficio 1015/1018's paper supply with an **optional 500 sheet paper bank** or **dual 500 sheet paper banks**.
- Handles paper **sizes up to 11" x 17"** for large format jobs.
- A standard **100 sheet Bypass Tray** enables you to produce jobs on heavier paper stocks, including envelopes, without disturbing the primary paper source.



## Efficient Digital Output

- **Combine Originals** – Place up to four originals onto one page to manage documents that you have to keep, but seldom refer to.



- **Electronic/Rotate Sorting** – Eliminate the need to purchase a costly sorter and still get automatically sorted output. (*Aficio 1015 requires additional paper bank for rotate sorting only.*)

## Easy-to-Use Control Panel

Fax, Printer, and Copier functions are located separately on the control panel for easy accessibility and increased productivity. A logically ordered control panel makes navigating the Aficio 1015/1018's capabilities a snap for both casual and advanced users.





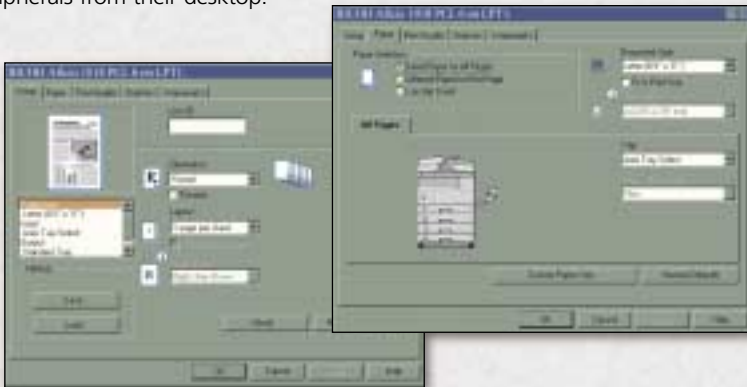
## Connectivity That Saves You Money

Not only does the Ricoh Aficio 1015/1018 excel as your advanced digital copier, it can also serve as your high-speed printer and fax system, eliminating the need for costly standalone systems. You will eliminate the need for separate supplies and maintenance contracts plus save money by producing print and fax output at economical copier costs.

## Network Printing Capabilities

The Ricoh Aficio 1015/1018 delivers outstanding printing performance via the optional Print Controller and optional Ethernet 10/100BaseT Interface.

- Support for all popular network operating systems assures that everyone on your network benefits.
- Out-of-box compatibility with today's most popular business and graphics software with **standard PCL 5e/6** and **optional Postscript 2 emulation**.
- **Up to 80 MB of SDRAM memory** and Send Once, RIP Once technology to speed you through even the most complex print jobs.
- Print **envelopes** through the multi-purpose bypass tray.
- **SmartNetMonitor utility software** allows users and administrators the ability to monitor and manage their Ricoh Aficio printer peripherals from their desktop.



## Faxing Capabilities That Are Quick and Powerful

Your documents always make it to their destinations in the most cost-effective and expeditious way possible. In fact, you'll have a hard time finding any fax system that can keep up with the Ricoh Aficio 1015/1018 Fax Option.

- **Super G3 33.6 Kbps Modem** – Transmit your documents in as little as 3 seconds per page, which significantly reduces your phone bills.
- **Full Dual Access** – Allows you to do multiple tasks at the same time such as scanning a document into memory while receiving another document.
- **Up to 11" x 17" Faxing** – Automatically send and receive documents size for size. Great for graphic arts, engineering and manufacturing professionals.
- **Reliability Capabilities** – Substitute Reception automatically stores incoming faxes into memory if paper or toner runs out and One-Hour Document Memory Backup ensures that you will receive all important documents.
- **Advanced Capabilities** – Enjoy high volume fax performance thanks to capabilities such as Serial Broadcasting, Send Later, Image Rotation, Restricted Access and Batch Transmission.



## Low Cost Convenience

The Ricoh Aficio 1015/1018's dual component consumable design lowers the cost-per-page, which adds up to significant savings over time. Routine maintenance is an easy task.



## Environmentally Friendly

Ricoh is committed to manufacturing products that create a healthier and safer environment for all. Ricoh received three awards from the EPA in the year 2000; Excellence in Consumer Education: Labeling Partner of the Year and Office Equipment Partner of the Year. This caps five successive years of recognition by the government for the leadership Ricoh has shown in the Energy Star program.

***The Ricoh Aficio 1015/1018...  
Dependable Digital Systems  
Built for Business***

# Aficio® 1015/1018 *Integrated Digital Imaging Systems*

## Engine Specifications

<b>Imaging Process:</b>	Dry Process, (dual component)
<b>Reading Element:</b>	Solid State Scanner
<b>Configuration:</b>	Desktop
<b>Resolution:</b>	600 x 600 dpi
<b>Grayscale:</b>	64 Gradation Levels
<b>Paper Supply:</b>	250 Sheet Tray (Aficio 1015) 250 Sheets x 2 Trays (Aficio 1018)
<b>Bypass:</b>	100 Sheets, #10 Envelopes
<b>Paper Weight:</b>	16 – 24 lb. Bond (Paper Trays) 14 – 42 lb. Bond (Bypass)
<b>Output Tray Capacity:</b>	250 Sheets
<b>Power Source:</b>	120V/60Hz/15A
<b>Dimensions (WxDxH):</b>	21.7" x 22.4" x 16.5" (Aficio 1015) 21.7" x 22.4" x 20.4" (Aficio 1018)
<b>Weight:</b>	77 lbs. (Aficio 1015) 93 lbs. (Aficio 1018)

## Copier Specifications

<b>Warm Up Time:</b>	20 Seconds
<b>First Copy Speed:</b>	6.9 Seconds
<b>Multi-Copy Speed:</b>	15 copies/minute Letter (Aficio 1015) 18 copies/minute Letter (Aficio 1018)
<b>Quantity Indicator:</b>	1 – 99
<b>Original Type:</b>	Sheet/Book
<b>Original Size:</b>	Up to 11" x 17"
<b>Copy Size:</b>	5½" x 8½" to 11" x 17"
<b>Reproduction Ratios:</b>	50%, 65%, 78%, 93%, 121%, 129%, 155%
<b>Zoom:</b>	50% – 200% in 1% increments
<b>Memory Capacity:</b>	16 MB Standard, 32 MB Optional

## Copier Features

Auto Image Density	Image Rotation
Auto Paper Select	Photo Mode
Auto Reduce/Enlarge	Rotate Sorting*
Auto Start	Scan Once, Print Many
Auto Tray Switching	Series Copying
Combine Originals	User Codes (50)
Electronic Sorting	User Tools
Energy Saver Mode	

\* Requires optional paper bank on the Aficio 1015.

## Network Printer Option Specifications

<b>Print Speed:</b>	15 PPM (Aficio 1015) 18 PPM (Aficio 1018)
<b>Interface:</b>	Standard: IEEE 1284 Optional: Ethernet 10/100BaseT
<b>Network Protocol:</b>	TCP/IP, IPX/SPX, AppleTalk (Autoswitching)
<b>CPU Speed:</b>	75 MHz
<b>RAM Memory Capacity:</b>	Standard: 16 MB SDRAM Optional: Up to 80MB SDRAM

<b>PDL:</b>	Standard: PCL 5e/6 Optional: PostScript 2 (emulation)
<b>Print Drivers:</b>	PCL 5e for Windows 3.x*/95/98/ME (Millennium Edition), NT 4.0, 2000 PCL 6 for Windows 3.x*/95/98/ME (Millennium Edition), NT 4.0, 2000 PS2 for Windows 3/95/98/ME (Millennium Edition), NT 4.0, 2000 Macintosh 8.x/9.x
<b>Resolution:</b>	PCL5e/6: 600 dpi PS2(emulation): 600/300 dpi

## Printer Features

Auto Tray Select
Auto Tray Switching
Envelope Printing
Paper Size Setting
Tray Locking
Watermarks

## Facsimile Option Specifications

<b>Circuit:</b>	PSTN, PBX
<b>Compatibility:</b>	ITU-T G3
<b>Modem Speed</b>	33.6 Kbps V.34 w/ Auto Shift Down
<b>Transmission Speed</b>	G3: 3.0 seconds*, **
<b>Scanning Speed:</b>	1.2 seconds
<b>Data Compression:</b>	MH, MR, MMR
<b>Resolution:</b>	200 x 100/200/400 dpi
<b>Page Memory:</b>	2 MB
<b>Memory Backup:</b>	1 Hour
<b>Quick Dials:</b>	32 Numbers
<b>Speed Dials:</b>	100 Numbers
<b>Group Dials:</b>	9 Groups

## Fax Features:

Authorized Reception	Parallel Memory Transmission
AI Short Protocol	Polling Reception/Multi
Auto Reduction	Reception Time Printing
Batch Transmission	Restricted Access
Battery Backup	Send Later
Dual Access	Serial Broadcasting
Error Correction Mode	Stamping (with opt. ADF)
Image Rotation	Substitute Reception
Manual Reception	Super Smoothing
Page Retransmission	Transfer Request

\* Based on ITU-T Test Chart #1 in standard mode.

\*\* Approximately 3 seconds per page at 33.6 Kbps is dependent on optional line quality. Customer performance may vary by location.

## Accessories

### DF72 Automatic Document Feeder

<b>Original Size:</b>	5½" x 8½" to 11" x 17"
<b>Original Weight:</b>	14 to 28 lb. Bond
<b>Original Capacity:</b>	30 Sheets
<b>Dimensions (WxDxH):</b>	21.6" x 20.5" x 3.6"
<b>Weight:</b>	15.4 lbs.

### PS460 Paper Bank\*

<b>Paper Capacity:</b>	500 Sheets x 1 Tray
<b>Paper Size:</b>	5½" x 8½" to 11" x 17"
<b>Paper Weight:</b>	16 to 28 lb. Bond
<b>Dimensions (WxDxH):</b>	21.6" x 20.5" x 5.3"
<b>Weight:</b>	26.5 lbs.

### PS450 Paper Bank\*

<b>Paper Capacity:</b>	500 Sheets x 2 Trays
<b>Paper Size:</b>	5½" x 8½" to 11" x 17"
<b>Paper Weight:</b>	16 to 28 lb. Bond
<b>Dimensions (WxDxH):</b>	21.6" x 20.5" x 10.6"
<b>Weight:</b>	55.1 lbs.

\*Cabinets Available

**Note:** All systems shown with optional automatic document feeder, 500 x 2 paper bank, faxing and network printing capabilities.

Ricoh Consumables. For maximum performance and yield, we recommend using genuine Ricoh parts and supplies.

Specifications and external appearance are subject to change without notice.

♻️ Printed in the U.S.A. on recycled paper because Ricoh cares.

Ricoh is a registered trademark of Ricoh Company, Ltd. All other trademark are the property of their respective owners. ©Ricoh Corporation



EPA 1998/1999 Imaging Partner of the Year, EPA 1997 Copier Partner of the Year, EPA 1996 Overall Office Equipment Partner of the Year, EPA 2000 Excellence in Consumer Education: Labeling partner of the Year and Office Equipment Partner of the Year. Ricoh Corporation has determined that this product meets the Energy Star® guidelines for energy efficiency.

OFFICIAL COPIER AND FAX OF THE PGA OF AMERICA



# RICOH®

Image Communication

Ricoh Corporation, Five Dedrick Place, West Caldwell, NJ 07006  
Phone: (973) 882-2000 Website: <http://www.ricoh-usa.com>