

The RICOH **fax4410L**
fax4410NF

HIGH PERFORMANCE WORKGROUP LASER FACSIMILE SERIES

color scan
to email

duplex printing

IP faxing



RICOH[®]

Shifting Office Communications into High Gear . . .



Seamlessly integrating sophisticated fax performance, with network cost efficiency, the RICOH® FAX4410 Series is designed to handle a wide variety of your critical document communication and imaging tasks with ease.

Ricoh has developed two dynamic systems that exceed today's technological requirements for sending hardcopy documents: the Ricoh FAX4410L standalone fax system and the FAX4410NF network fax system. Besides standard faxing, documents can be sent to email addresses via the internet, even in color (Color Scan to Email). IP Faxing enables documents to be sent to other IP Fax systems at high speeds. Duplex scanning and printing also help to increase efficiencies and reduce cost. Innovative digital technology that streamlines document workflow for dramatic improvements in productivity makes the Ricoh FAX4410 series the answer to your hard copy document communication needs.

RICOH FAX4410L High Performance Fax	FEATURE	RICOH FAX4410NF Network Fax/Color Scan to Email
750 sheets (One 250-sheet tray, one 500-sheet tray)	Standard Paper Capacity	350 sheets (One 250-sheet tray + One 100-sheet Bypass Tray)
600 sheets (One 500-sheet tray, one 100-sheet Bypass Tray)	Optional Paper Capacity	1,000 sheets (Two 500-sheet trays)
1,350 sheets	Maximum Paper Capacity	1,350 sheets
Optional	2nd 33.6 Kbps Modem with JBIG	Optional
Optional	Color Scan to Email	Standard
Optional	Internet Faxing (T.37)	Standard
Optional	IP Faxing Real-Time (T.38)	Standard
Optional	LAN Faxing	Standard
Optional	PCL 5e/6 600 dpi Printer	Optional

Connectivity without the Complexity

The Ricoh FAX4410NF harnesses the power of your network and the Internet to perform key document distribution and management tasks:

DOCUMENT COMMUNICATION & OUTPUT

- Color and B&W Scan to Email
- Internet Faxing
- IP-Faxing
- LAN Faxing
- Convenience Printing

DOCUMENT AND SYSTEM MANAGEMENT

- Auto Backup of Received/Transmitted Documents
- Download of Transaction Journal
- Inbound Fax Routing
- Scan to File/Folder⁴
- (DHCP) Dynamic Host Configuration Protocol
- Remote Programming & Monitoring

Color Scan to Email – Paperless, Confidential

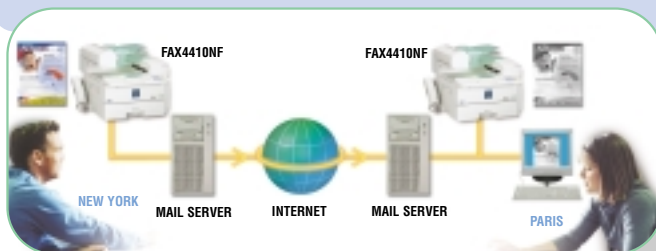
Color photos, brochures, maps, business charts, floor plans—virtually any paper document—can be scanned into memory (as a PDF or JPEG file) and transmitted directly to the recipient's email inbox. Scanning in full color (or black & white) has never been easier. What's more, documents are transmitted via the Internet... without incurring telephone charges.



Typical Fax Document



Color Document Sent by Email at 600 DPI

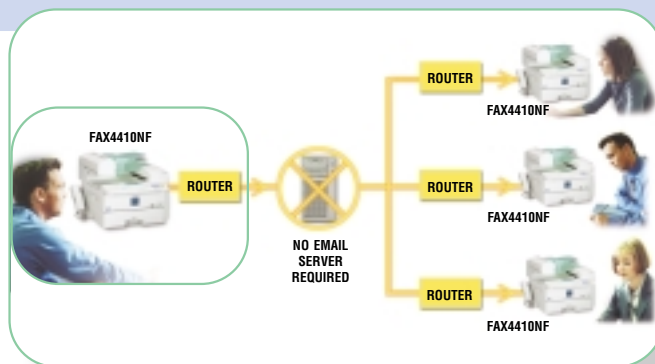


Internet Fax to Internet Fax (T.37)

Another “no-charge” method of fax communication is Internet Fax. Like Scan to Email, you simply enter the email address(es), only with Internet Fax the specified address is another Internet Fax. In this case, the document prints upon reception.

IP-Faxing – Real Time Faxing (T.38)

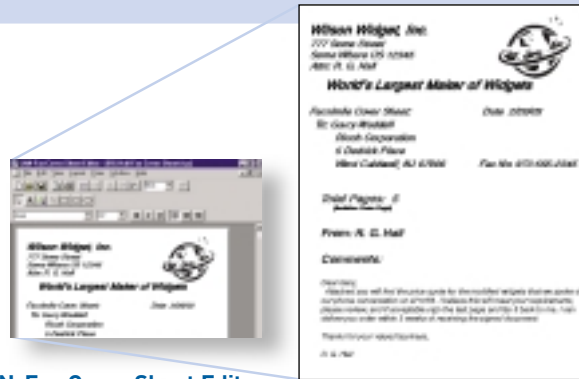
IP-Faxing allows communication between a network of Ricoh FAX4410NF's or other IP (T.38) compatible devices. You simply enter the IP address of the receiving IP-Fax system. Similar to a traditional fax communication, the transmission and reception is in real time, with confirmation reports. Unlike traditional fax, IP-Fax is super fast and provides resolutions up to 600 dpi. Also, because communication is over a LAN/WAN (Local Area Network/Wide Area Network), no phone charges are incurred. IP-Fax bypasses the telephone network, slashing communication costs.



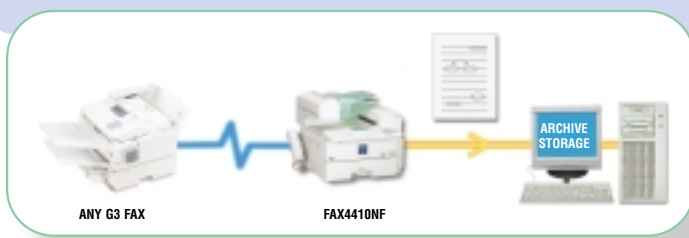
LAN-Fax – Convenient Desktop Faxing

LAN Faxing allows your multi-user workgroups to increase productivity by sending documents directly from their desktops to the FAX4410NF to be faxed to any G3 fax unit. A Transmission Result Report can also be automatically returned back to the sender's PC.

The "LAN Fax Cover Sheet Editor" allows each user to create a customized fax cover sheet (or sheets), using both graphics, such as company logos, and text to meet their specific needs.



LAN-Fax Cover Sheet Editor



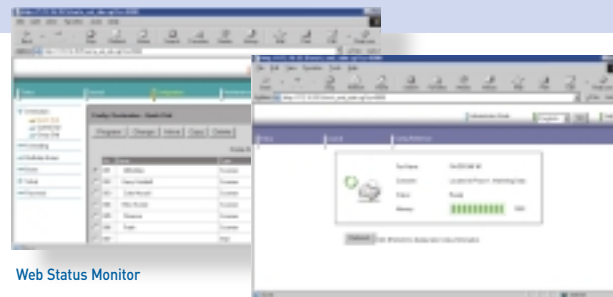
Auto Document Backup – A Smart Business Decision

Documents received or sent via the FAX4410NF can be captured electronically to another location, so if the paper document is lost, there is always a copy of the original.

Incoming documents are printed and electronic back up files are sent to an archival location.

Web Status Monitor – Remote Access Saves Time

Through a network computer and Web Browser, quickly check system status. Program or change settings, such as Quick and Speed Dials, network settings, review or download a transaction journal, and even check to see if a system is out of toner or paper.



Web Status Monitor

Easy To Use Operation Panel

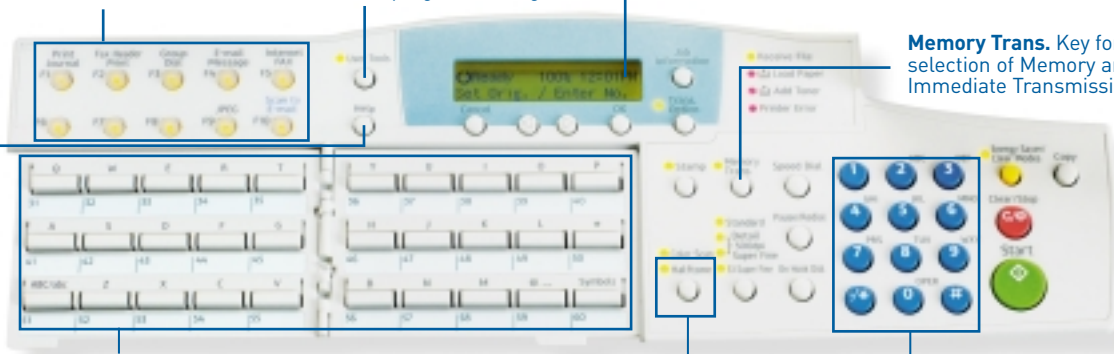
10 User Function Keys Dedicated Internet Fax, Scan to Email and JPEG Keys. All keys are user-programmable.

User Tools Key opens function menu for fast selection of program settings.

22 x 2-line LCD with back light for easy viewing of system status and settings.

Memory Trans. Key for easy selection of Memory and Immediate Transmission Mode.

Help Key outlines procedures for frequently used functions.



90 Quick Dial Keys (30 x 3 panels) for one-touch transmitting, in addition there are 200 speed dial numbers.

Color Scan/Halftone Key


10-Keypad for manual entry of fax numbers, email addresses or other program data.

The QWERTY Keypad, styled after the PC keyboard, allows easy entry of destination names, fax headers, names and email addresses. If preferred, the keyboard can be changed to ABC format.

The Ricoh FAX4410 Series . . . Productivity Through Connectivity

Advanced Fax Capabilities of the Ricoh FAX4410L and FAX4410NF

Two Speeds...Fast and Faster

- **Super G3 33.6 Kbps modem with JBIG compression** ensures a fast transmission speed—up to 30 pages per minute!

- A **Second 33.6-Kbps (G3) Line** option can be added. Each line operates independently, so two lines are always available for transmission and/or reception. For example, **Simultaneous Broadcast**, where both lines transmit one document at the same time, effectively doubles fax throughput capacity. Or dedicate one line to fax receptions and the other to transmissions.
- Supporting fax receptions, copy runs and print jobs is a robust **15-ppm printer engine**, one that utilizes precision laser technology for fast, reliable throughput and outstanding image quality, at up to 600 x 600 dpi. In addition, all printed documents are automatically collated.

High Memory Capacity = Application Flexibility

- The standard high-capacity **7-MB standard memory** allows for storage of up to 560 pages² and is expandable to 2,200 pages².
- **Memory Battery Backup** means all documents stored in Standard Memory are retained during power loss for **up to 12 hours**. The optional 40MB Memory Card is non-volatile and thus retains documents in memory (received or stored for sending) indefinitely.
- **Quick Memory Transmission** enables the Ricoh FAX4410 Series to begin dialing immediately, while pages are scanned into memory, shortening the time that the fax unit is in use per job.



Paper Handling Versatility

- The large **70-sheet Automatic Document Feeder**, and fast **1.3-second per page scan speed**, (up to 33 pages per minute) make quick work of storing multi-page documents to memory.
- The standard paper supply, 750 sheets for the FAX4410L and 350 sheets for the FAX4410NF, is expandable to a total capacity of 1,350 sheets, to meet the needs of high-usage office environments.
- **Compact Design**—The Fax4410 Series footprint is very compact with no trays extending out (as many other fax units do), thus maximizing valuable workspace.



Duplexing Saves Time and Money

- **Duplex Fax Reception**—A first of its kind, the FAX4410 Series can print received faxes on both sides of the paper, cutting paper costs and saving the time it takes to replenish paper during peak times.
- **Duplex Scan**—Two-sided documents can be scanned, eliminating the need to copy the document onto one-sided sheets first, saving you time and money.
- Duplexing in **Copy Mode**.

15 ppm PCL Printer (Optional)

- High quality, PCL5e/6, 600 dpi **printing capability** can be added to the Fax4410 Series, allowing duplex printing of documents as well as features such as paper tray selection, slip sheet insertion, and watermark printing. Utilizing the Bypass Tray, specialty papers such as envelopes and labels can be printed. Additionally, a Network Interface Board (NIB) can be added to provide network printing capability, plus optional **PostScript Level II** compatibility for Macintosh users.

The Ricoh FAX4410 Series . . . Productivity Through Connectivity

RICOH FAX4410L/NF SPECIFICATIONS

Type:	Desktop Facsimile
Recording Method:	Laser
ITU-T Compatibility:	Group 3 (V.34); ECM
Modem Speed:	33.6 Kbps with Auto Fallback
Transmit Speed (Max.):	2 seconds per page ¹
Data Compression:	MH/MR/MMR/JBIG
Scan Speed (Letter, Standard resolution):	1.3 seconds per page ² B&W 4 seconds per page Color
Dual Access:	Standard
Document Memory (Standard):	7MB (560 pages ³)
Document Memory (Optional):	40MB (2,200 pages ³)
Autodialer:	90 Quick Dials; 200 Speed Dials; 9 Groups
User Function Keys:	10 (dedicated keys)
Document Memory Backup:	12 hours with Standard Memory; infinite with 40MB Memory Card
Automatic Document Feeder Capacity:	70 sheets
Document Width/Scan Width/Length (Max.):	8.6" / 8.48" / 47.2"
Scan Resolution:	Standard: 200 x 100 dpi Detail: 200 x 200 dpi Super Fine: 400 x 400 dpi Extra Super Fine: 600 x 600 dpi Halftone: 64 levels with ARGONA ³
Print Speed (Max.):	15 pages per minute
Print Resolution (Max.):	600 dpi (fax and printer)
Resolution Enhancement:	Super Smoothing HQTM
Recording Width/Paper Size (Max.):	8.26" / 8.5" x 14"
Paper Capacity (Standard):	
FAX4410L:	250 sheet letter-size cassette + 500 sheet letter-/legal-size cassette (750 sheets)
FAX4410NF:	250 sheet letter-size cassette + 100 sheet Bypass Tray (350 sheets)
Paper Capacity (Optional):	
FAX4410L:	500 sheet letter-/legal-size cassette + 100 sheet Bypass Tray
FAX4410NF:	500 sheet letter-/legal-size cassette x 2
Paper Capacity/Sources (Max.):	1,350 sheets/4
Multi-Copy Capacity:	Up to 99 (with duplexing)
LCD Display Size:	2 lines (22 characters each line)
Power Consumption:	Max: Less than 1000W Min: Less than 2W/6V
Power Requirements:	120V, 60Hz
Environment:	59 to 77° F, 30 to 70% RH
Dimensions (WxDxH):	
FAX4410L:	17.6" x 21.7" x 21.6"
FAX4410NF:	17.6" x 21.7" x 16.2"
Weight:	
FAX4410L:	61.7 lbs.
FAX4410NF:	50.7 lbs.
Consumable Yields:	Toner Cartridge: 5,000 pages ²
Photoconductor Unit:	45,000 pages

INTERNET FAX / IP-FAX / SCAN TO EMAIL (NIC FAX UNIT)

Network/Connection:	LAN, 100/10Base-T Ethernet, RJ-45
Transmission Speed:	100/10 Mbps
Document Size:	8.5" x 11", 8.5" x 14"
Compatibility:	Internet Fax: ITU-T Rec. T.37 IP-Fax: ITU-T Rec. T.38
Scan Resolution:	
Internet Fax:	Standard: 200 x 100 dpi Detail: 200 x 200 dpi
IP-Fax:	Standard: 200 x 100 dpi Detail: 200 x 200 dpi Super Fine: 400 x 400 dpi Extra Super Fine: 600 x 600 dpi

Scanner:	Std. B&W: 200 x 100 dpi Std. Color: 100 x 100 dpi Detail: 200 x 200 dpi 300 dpi: 300 x 300 dpi Super Fine: 400 x 400 dpi Extra Super Fine: 600 x 600 dpi Email Trans.: SMTP, TCP/IP Email Rec.: POP3, SMTP, IMAP4, TCP/IP IP-Fax: T.38 Annex B, TCP, UDP/IP Scanner: FTP, TCP/IP
Internet Protocols:	Single/Multi-Part, MIME Conversion
Email Format:	TIFF (MH Compression), DCX, JPEG, PDF
Attached File Format:	POP before SMTP, SMTP Authentication, APOP
Security:	Dynamic Host Configuration Protocol (DHCP): Standard
Web Status Monitor:	Standard

NIC FAX FEATURES

- Internet Fax & Scan to Email**
 - Backup Transmission/Reception
 - Color/B&W Scan Modes
 - E-mail Subject/Message/Suffix Templates
 - Error Mail Notification
 - Journal by Email
 - Reception Confirmation
 - ScanRouter Lite Included
- IP-Fax (Real Time, T.38)**
 - Reception Confirmation
- LAN-Fax** (Software Included)
 - Address Book, Broadcast, Convenience Printing

GENERAL SYSTEM FEATURES

Automatic Collation
Clock (with Auto Summer Time Adjustment)
Counters (Tx/Rx/Scn/Prt)
Dual Access (Multitasking)
Scan Duplex Documents
Energy Saver Mode
Help List
Keystroke Programs
Label Registration for Quick/Speed Dials
Personal Codes
Photo (Halftone) Mode
Power Failure Report
QWERTY Keypad
Remaining Memory Indicator
Restricted Access
User Function Keys

FAX COMMUNICATION FEATURES

Chain Dialing
Communication Failure Report
Error Report
Fax Headers (2)
Journal (Auto/Manual Print)
Lists (Quick/Speed/Prog./Grp/User Fnct)
Memory File Transfer
Monitor Speaker
No Document, No Dial
On Hook Dialing
Polling Trans/Reception
Quick Dial Label Print
Redial (Auto/Manual)
Shortened Protocol
Telephone Directory

FAX TRANSMISSION FEATURES

Auto Document
Auto Page Retransmission
Auto Reduction (Transmit)
Backup File Transmission
Batch Transmission
Blank Document Detection

Forwarding
Immediate/Memory Transmission
ITU-T Sub-Address
Label Insertion
Memory Storage Report
Page Count
Page Retransmission
Quick (Parallel) Memory Transmission
Send Later
Serial Broadcast (Immediate/Later)
Simultaneous Broadcast (via Opt. 2nd G3 Modem)
Transfer Request
Transfer Transmission
Transmission Confirmation Report
Transmission Failure Report
Transmission Reserve
Verification Stamp

FAX RECEPTION FEATURES

Authorized Reception
Confidential Reception (with/without ID)
Continuous Polling
Checked Mark (Document Separation)
Duplex Fax Reception
Memory Lock
Memory Polling
Multi-Copy Reception
Multi-Polling Reception
Reception Time Print
Specified Cassette Select (with Optional Paper Cassette)
Substitute Reception
Two-in-One Reception

PRINTER FEATURES

Print Speed (Letter): 15-ppm
Printer Resolution (Max.): 600 x 600 dpi
Interface: Ethernet 100-TX/10-T, IEEE1284 Parallel
Printer Memory (Std/Max.): 16MB/144MB
Operating System: Windows 95/98/Me/NT 4.0/2000/XP
Printer Control Language: PCL5e/6; PostScript 2 (Optional)
Other Features: Duplex, Collate, Slip Sheet, Page Protect, Auto Continue, Auto Tray Select, Tray Lock, Font Storage, Watermark, Toner Saver, Edge Smoothing, User Code, Bypass Tray Print

OPTIONS

100-Sheet Bypass Feeder Type 300
32-/64-/128-MB Printer Memory Type B
40MB Memory Card (Feature Expander) Type 410
500-Sheet Paper Feed Unit Type PS480
Cabinet Stand
G3 Interface Unit (2nd 33.6 Kbps Line) Type 410
Network Interface Board Type 1018 (see Printer Features)
NIC Fax Unit Type 410 (FAX4410L only)
PostScript 2 Interface Unit Type 1018
Print Controller
Telephone Handset Type 1018

SUPPLIES

ADF Maintenance Kit Type 300
Marker Refill Type 30
Toner Cartridge Type 1160
Photoconductor Unit Type 1013

1 Approximately 2-seconds per page at 33.6 Kbps with JBIG is dependent upon optimal line quality, and customer performance may vary by location.

2 Based on ITU-T Test Chart #1 in Standard resolution.

3 ARGONA® Advanced Ricoh's Graphic Operation by New ASIC based on diffusion method.

4 This feature requires ScanRouter Software (Pro or Lite). ScanRouter Lite included.

Specifications are subject to change without notice. All product names are trademarks of their respective holders.



EPA 2000 Office Equipment Partner of the Year (5th consecutive year)
EPA 2000 Labeling Partner of the Year

Ricoh Corporation has determined that this product meets the Energy Star® guidelines for energy efficiency.



Printed in U.S.A. on recycled paper because Ricoh cares.

Ricoh is a registered trademark of Ricoh Company, Ltd. holders.
©Ricoh Corporation



OFFICIAL COPIER,
PRINTER AND FAX
OF THE PGA OF AMERICA



RICOH[®]
Image Communication

Ricoh Corporation, Five Dedrick Place, West Caldwell, NJ 07006
Phone: (973) 882-2000 Website: <http://www.ricoh-usa.com>

FA-0230