

SP2000 Dot Matrix Printer

Features

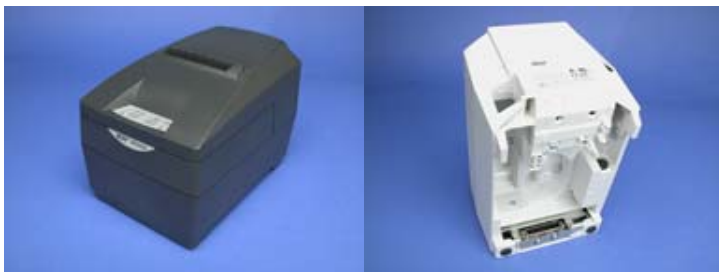
- **High Performance, Low Cost**
- **Small Footprint**
- **Two Color Capability**
- **Fiscal Memory Space Underneath**

Models Available:

- **SP2320: Basic Model**
- **SP2360: Two Color Model**
- **SP2520: Basic Model w/ Auto Cutter**
- **SP2560: Two Color Model w/ Auto Cutter**



The SP2000 dot matrix impact printer is a high performance printer ideal for a variety of POS applications from elegant dining establishments to your local corner deli. The SP2000 is positioned in a class with our popular SP300 printers, but has the footprint of our small SP200 printer. Standard features include logo store, dual cash drawer drivers, Star & ESC/POS mode emulation with a cartridge type interface in RS-232C and bi-directional parallel (IEEE1284). Options include paper rewinder for journals, near end paper sensor and wall mounting bracket. Models are available from a basic single color, tear bar version to a two-color model with auto cutter. The SP200 series are an easy drop-in replacement and are backed by Star's 3-year warranty.



Specifications

Print Speed	3.1 lines/sec
Paper Width	3" (76 mm)
Character Size	7 x 9, 5 x 9
Print Width	2.5" (63 mm)
Resolution	9-Pin print head
Print Columns	42/35
Interface	RS232C, Bi-Directional Parallel
Emulation	Star, ESC/POS™, ASB, Code page support
Cutter	Full or partial cut by command
Reliability	18 million lines MCBF
Multiple Copies	Original + 2 Copies
Power Supply	PS60L, PS48(internal mount)
Case Color	Putty or Charcoal
Drivers	Windows 98, Windows NT and OPOS, JavaPOS™

*ESC/POS is a registered trademark of Epson Seiko LTD.
All specifications subject to change without notice.