

Master Clock Control Software

Take the power of the LTR8-512 Master Clock to a whole new level!

Meet your needs with 3 versions

MasterLink Standard

1 Master Clock and 8 schedules

MasterLink Pro

12 Master Clocks and 100 schedules

MasterLink Enterprise

Unlimited Master Clocks and schedules

Standard features

- Control Master Clocks connected directly to your PC using RS232 & RS485 or remote Master Clocks using your PC's modem or network connection (with optional ethernet adapter).
- Program holiday lists and schedule changes for easy maintenance of your Master Clocks.
- Synchronize the Master Clock's time to the NIST Atomic clock.
- View the status of each Master Clock and its configuration for fast and efficient diagnostics and support.

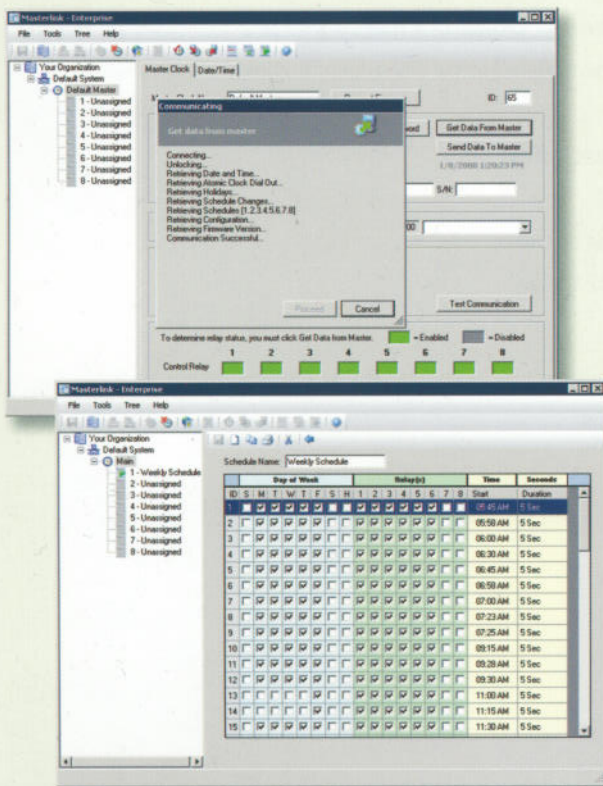


Managing bell schedules was never easier.

Managing Global Schedules is an essential operation in the Masterlink Software. It allows you to manage schedules for the entire organization. Once the schedules are defined, they can be assigned to one or more Master Clocks.

Simply "point and click" to set day of week and bell assignments

The simple point and click interface gives you the ability to easily add new or edit existing Global Schedules. For example, if a school changes when classes start and end, or they change the number of days per week classes are in session, it is now much easier to compensate for these changes.



Schedules

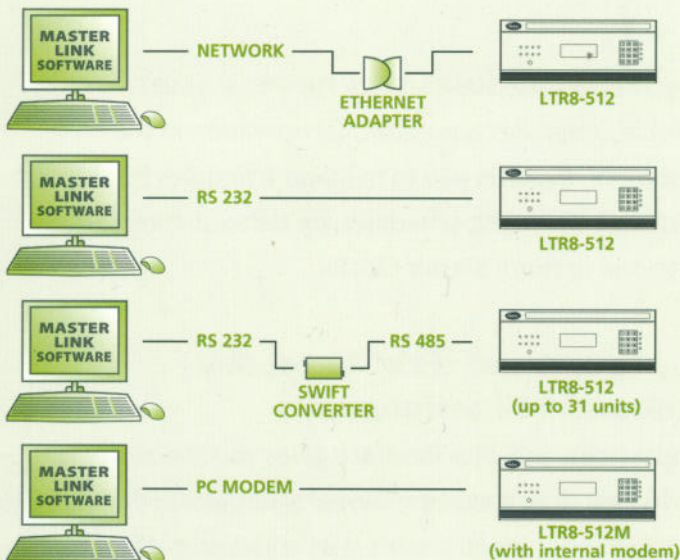
Schedules are easily created and modified to meet user needs. The user selects the days, circuits, time and the duration for each event to occur and then save the entire schedule. A time saving row copy feature lets the user duplicate event data for different times of the day. Each schedule can have up to 64 multiday, multi-circuit events while each Master Clock can have up to 8 schedules assigned to it to achieve a 512-event capacity.

Site Information

The user can record the physical location for a specific Master Clock and the name of the individual responsible for it at its location. The Master Atomic Clock Setup allows the user to specify the day and time they want the Master Clock to contact the NIST Atomic Clock (if the Master has a built in modem) and also indicates the Time Zone in which the Master Clock is located.

Connection

With MasterLink the user can view and edit the connection of the Master Clock to the PC using RS-232, RS485 modem or network connections (with optional ethernet adapter).



Time/Date

The user has several different options to synchronize the Master Clock system. PC to Master Clock or Network to Internet Synch which can update the Master Clock time at a specific time. User's can also setup the Daylight Saving Time function by simply choosing the code for the appropriate country.

Holidays

The Master Clock is capable of remembering the dates of up to 16 holidays. Just by clicking on the date in the MasterLink calendar that holiday is added to the list.

Minimum system requirements

- Pentium III Compatible or higher
 - Minimum: 500 MHz
- 256 MB RAM (512 MB if running Vista)
- 100 MB free hard disk space
- CD-ROM drive
- SVGA with at least 800x600 screen resolution
- Mouse or other pointing device
- An available 9 or 25-pin serial communications port
- Ethernet Network card for network communications (optional)
- Operating System
 - Windows Server 2003 SP1
 - Windows XP Home or Professional SP2
 - Windows Vista Home Premium, Business or Ultimate

Package Includes:

- CD-ROM
- QuickStart Guide
- 25' RS232 Cable



Lathem Time • Atlanta, Georgia USA • www.lathem.com

Lathem and the Lathem logo are registered trademarks of Lathem Time Corporation. Copyright ©2005 Lathem Time Corporation